

Marketing Media Content

- [Feature List](#)
 - [Logo Images](#)
 - [Images](#)
-

Feature List

For a list of features available within Sierra Chart, refer to the [Features](#) page.

Logo Images



[Sierra Chart Logo Link](#)



Sierra Chart Trading Platform

www.sierrachart.com

Images

This section lists images you can use on your website that provide a good representation of Sierra Chart capabilities.

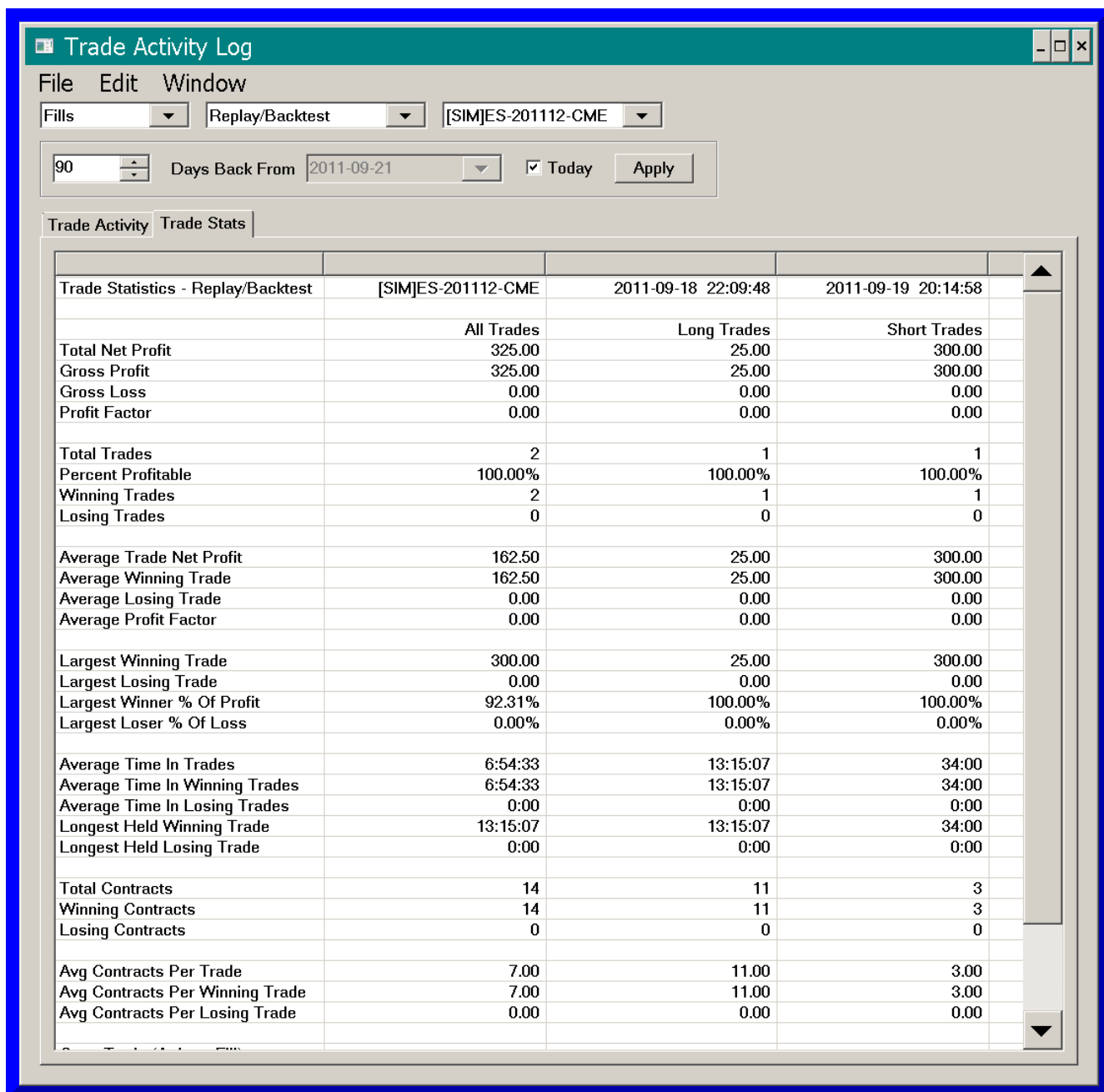


Chart Trade Window

Config1	[SIM] Qty:4	Buy	1345.75	Sell	P&L
Qty: 4 Target/Stops Match	DPL: 0.00P		1345.50		12.00P
Main Targets Set C			1345.25		11.00P
P: 4@1342.50	S Lmt Open 0 4 X		1345.00	4	2927 10.00P
P/L: 1.00P			1344.75		1396 9.00P
Acct #: SIM			1344.50		1478 8.00P
BUY MKT BUY ASK BUY BID			1344.25		1292 7.00P
SELL MKT SELL ASK SELL BID			1344.00		2509 6.00P
Flatten Reverse			1343.75		1297 5.00P
Cancel All Menu			1343.50		1234 4.00P
1 2 4			1343.25		1077 3.00P
5 8 10			1343.00		815 2.00P
<input checked="" type="checkbox"/> Use Attached Orders			1342.75		269 1.00P
	P/L: 1.00P +4@		1342.50		349 0.00P
			1342.25		829 -1.00P
			1342.00		1434 -2.00P
			1341.75		1409 -3.00P
			1341.50		1760 -4.00P
			1341.25		1423 -5.00P
			1341.00		1380 -6.00P
			1340.75		1221 -7.00P
			1340.50		1377 -8.00P
			1340.25		1406 -9.00P
	S Stop Open 0 4 X		1340.00	4	-10.00P
			1339.75		-11.00P
			1339.50		-12.00P
			1339.25		-13.00P

Trade Orders								
Edit Window								
<div>Cancel</div> <div>Cancel All</div> <div>Refresh Order List</div>								
Symbol	Status	Internal Order...	Order Type	Buy/Sell	Service Order...	Order Quant...	Filled Qua...	Price
[SIM]ES-201109-CME	Canceled	47027	Stop	Sell	47027	3	0	1131.75
[SIM]ES-201109-CME	Filled	47026	Limit	Sell	47026	3	3	1136.75
[SIM]ES-201109-CME	Filled	47025	Market	Buy	47025	3	3	1135.75
[SIM]ES-201109-CME	Filled	47024	Stop	Sell	47024	3	3	1135.50
[SIM]ES-201109-CME	Canceled	47023	Limit	Sell	47023	3	0	1140.50
[SIM]ES-201109-CME	Filled	47022	Market	Buy	47022	3	3	1136.75
[SIM]ES-201109-CME	Canceled	47021	Stop	Buy	47021	1	0	1141.75
[SIM]ES-201109-CME	Filled	47020	Limit	Buy	47020	1	1	1136.75
[SIM]ES-201109-CME	Filled	47019	Market	Sell	47019	1	1	1139.00
[SIM]ES-201109-CME	Filled	47018	Stop	Sell	47018	1	1	1140.50
[SIM]ES-201109-CME	Canceled	47017	Limit	Sell	47017	1	0	1145.50
[SIM]ES-201109-CME	Filled	47016	Market	Buy	47016	1	1	1141.75

Trade Activity Log						
File Edit Window						
<div>All Activity</div> <div>Replay/Backtest</div> <div>[SIM]ES-201109-CME</div>						
<div>500</div> <div>Days Back From 9/ 4/2011</div> <div><input checked="" type="checkbox"/> Today</div> <div>Apply</div>						
ActivityType	DateTime	Symbol	OrderActionSource	InternalOrderID	OrderStatus	ServiceOrd
Order	2011-08-18 19:37:15	[SIM]ES-201109-CME	Trade simulation fill	47019	Filled	47019
Fill	2011-08-18 19:37:15	[SIM]ES-201109-CME	Trade simulation fill	47019	Filled	47019
Order	2011-08-18 19:37:15	[SIM]ES-201109-CME	Updating Attached Order prices	47020	Pending Modify	
Order	2011-08-18 19:37:15	[SIM]ES-201109-CME	Internally modified order	47020	Pending Child	
Order	2011-08-18 19:37:15	[SIM]ES-201109-CME	Updating Attached Order prices	47021	Pending Modify	
Order	2011-08-18 19:37:15	[SIM]ES-201109-CME	Internally modified order	47021	Pending Child	
Order	2011-08-18 19:37:15	[SIM]ES-201109-CME	Auto-sent child from parent fill	47020	Order Sent	
Order	2011-08-18 19:37:15	[SIM]ES-201109-CME	Auto-sent child from parent fill	47021	Order Sent	
Order	2011-08-18 19:37:15	[SIM]ES-201109-CME	Simulated order accepted	47020	Open	47020
Order	2011-08-18 19:37:15	[SIM]ES-201109-CME	Simulated order accepted	47021	Open	47021
Order	2011-08-18 19:58:26	[SIM]ES-201109-CME	Trade simulation fill	47020	Filled	47020
Fill	2011-08-18 19:58:26	[SIM]ES-201109-CME	Trade simulation fill	47020	Filled	47020
Order	2011-08-18 19:58:26	[SIM]ES-201109-CME	Canceling order due to sibling fill	47021	Pending Cancel	47021
Order	2011-08-18 19:58:26	[SIM]ES-201109-CME	Simulated order canceled	47021	Canceled	47021
Order	2011-08-18 20:45:37	[SIM]ES-201109-CME	Replay 300.0X: ES-201109-CME 5 min #1 User ord...	47023	Pending Child	
Order	2011-08-18 20:45:37	[SIM]ES-201109-CME	Replay 300.0X: ES-201109-CME 5 min #1 User ord...	47024	Pending Child	
Order	2011-08-18 20:45:37	[SIM]ES-201109-CME	Replay 300.0X: ES-201109-CME 5 min #1 User ord...	47022	Order Sent	
Order	2011-08-18 20:45:37	[SIM]ES-201109-CME	Simulated order accepted	47022	Open	47022
Order	2011-08-18 20:45:37	[SIM]ES-201109-CME	Trade simulation fill	47022	Filled	47022
Fill	2011-08-18 20:45:37	[SIM]ES-201109-CME	Trade simulation fill	47022	Filled	47022
Order	2011-08-18 20:45:37	[SIM]ES-201109-CME	Updating Attached Order prices	47023	Pending Modify	
Order	2011-08-18 20:45:37	[SIM]ES-201109-CME	Internally modified order	47023	Pending Child	
Order	2011-08-18 20:45:37	[SIM]ES-201109-CME	Updating Attached Order prices	47024	Pending Modify	
Order	2011-08-18 20:45:37	[SIM]ES-201109-CME	Internally modified order	47024	Pending Child	



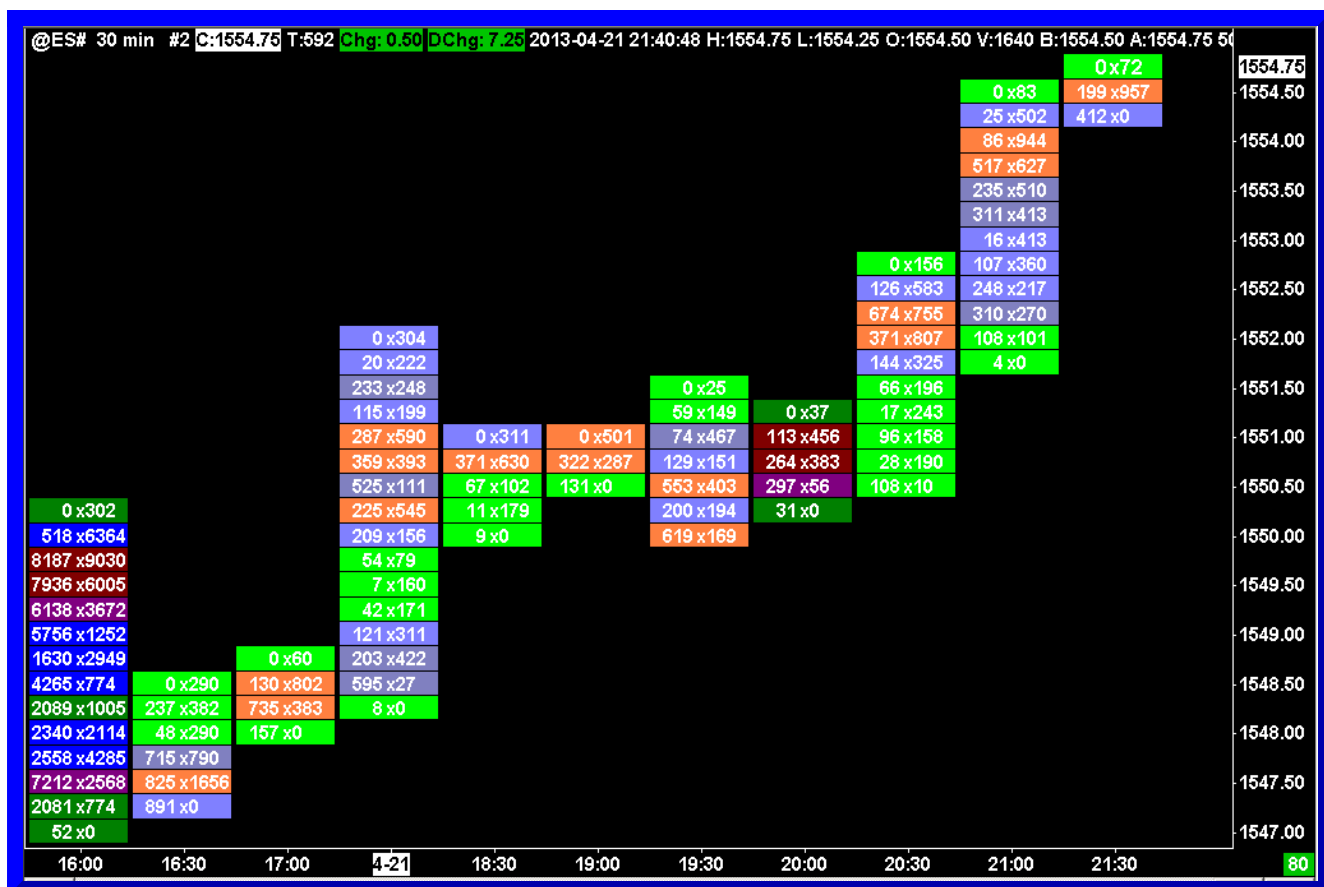


Chart Settings - EURUSD 30 Min #1

Main Settings | Advanced Settings | Advanced Settings 2 | Alerts

Date Range In File (yyyy-mm-dd):
2013-10-28 to 2014-02-11

☒ Use Number Of Days To Load
Days To Display/Load: 15
☐ Adjust Proportional With Bar Period

☐ Use Date Range
From: To:

Price Display Format: .00001
Tick Size: 0.000050
Volume at Price Multiplier: 1

Symbol: EURUSD Find

Trade and Current Quote Symbol: Find

☐ Automatically Rollover Futures Symbol

☐ Save Days to Load, Intraday Bar Period, Graph Draw Type as Default

Intraday Chart
Intraday Bar Period:
Bar Period Type:
Days-Mins-Secs Per Bar
Days-Mins-Secs Per Bar
Volume Per Bar
Number Of Trades Per Bar
Range Per Bar-Standard (in ticks)
Range Per Bar-New Bar on Range Met (in ticks)
Range Per Bar-True (in ticks)
Range Per Bar-Fill Gaps (in ticks)
Range Per Bar-Open=Close (in ticks)
Reversal Bar (in ticks)
Renko Bar (in ticks)
Flex Renko (BoxSize-TrendOff-RevOff)
Delta Volume Per Bar

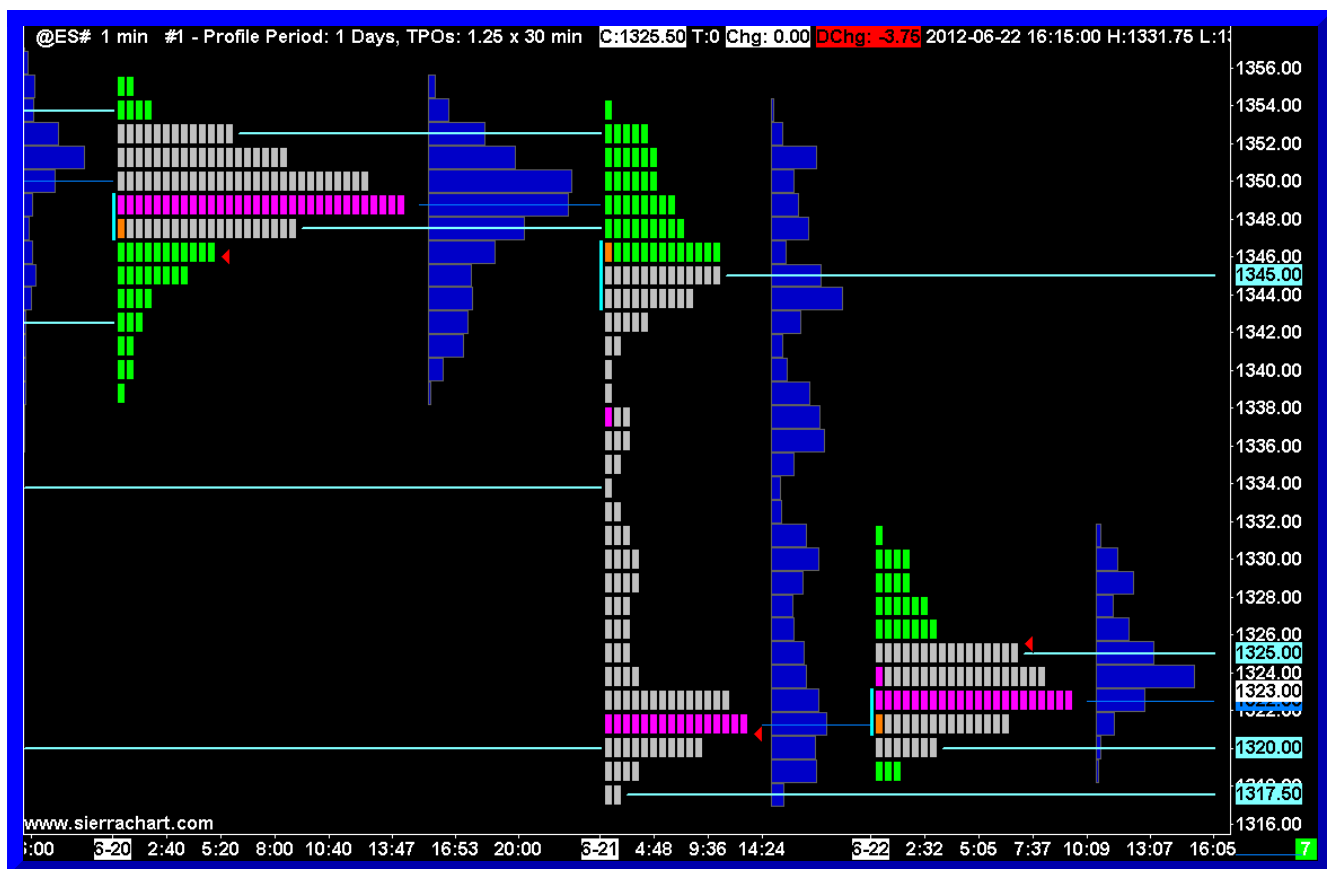
Evening End: 23:59:59
☒ New Bar At Session Start
☒ Load Weekend Data

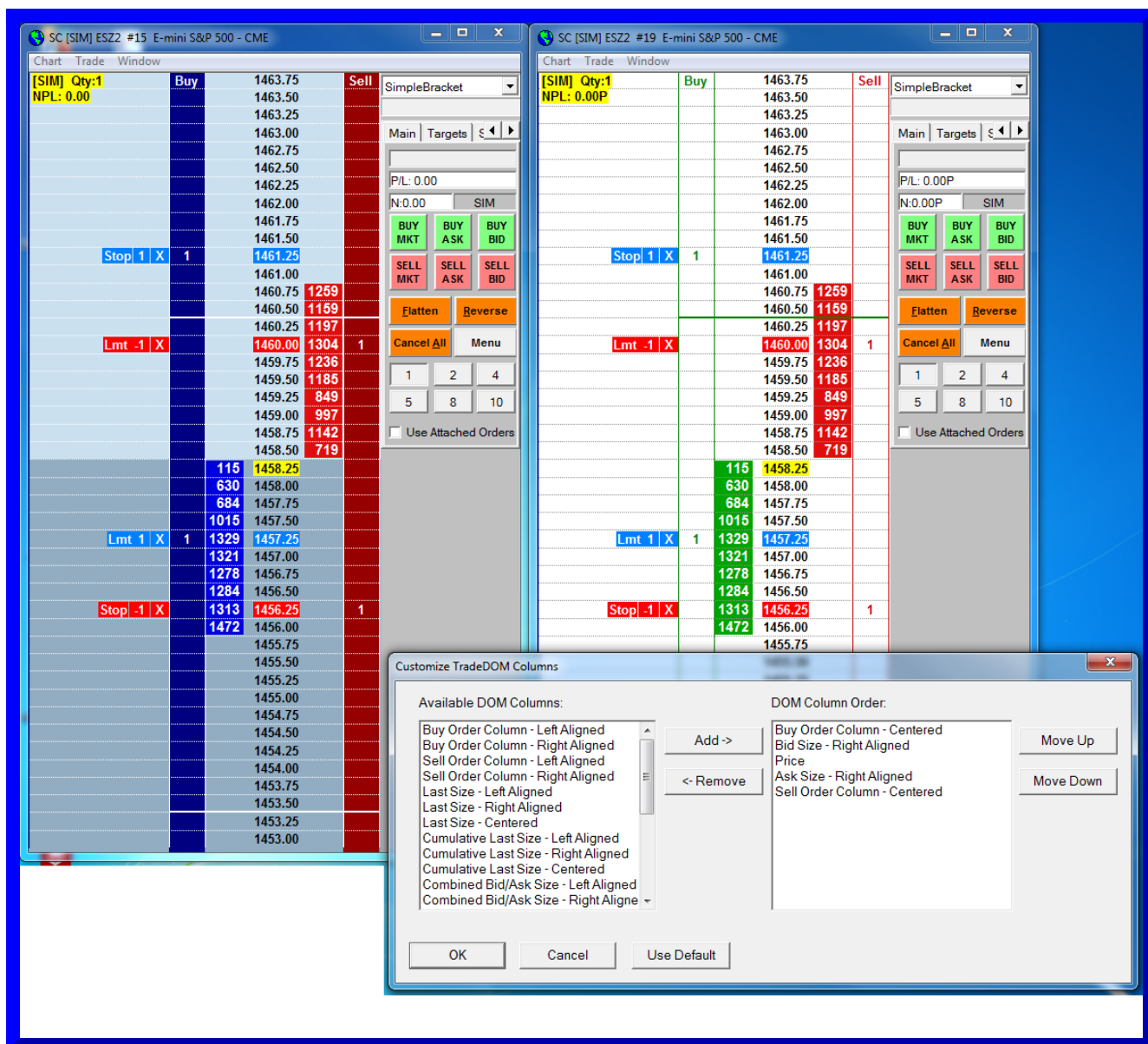
Historical Chart Bar Period:
☒ Days: 1
☐ Weekly
☐ Monthly
☐ Quarterly
☐ Yearly

Draw Type:
Bars
Stick Bars
Stick Body Only
n Close
ain
Bars

Apply Global Symbol Settings
Edit Global Symbol Settings

OK Cancel Apply Help





This image is from one of our customers, who is a very active daytrader, and demonstrates the high degree of customization possible with our Trade DOM.

*Last modified Wednesday, 05th July, 2023.